



SUMUKHA HITECH PRODUCTS INDUSTRY

Coatings & Adhesives Manufacturer

Product Catalog

PRODUCT YEAR 2024

About Us

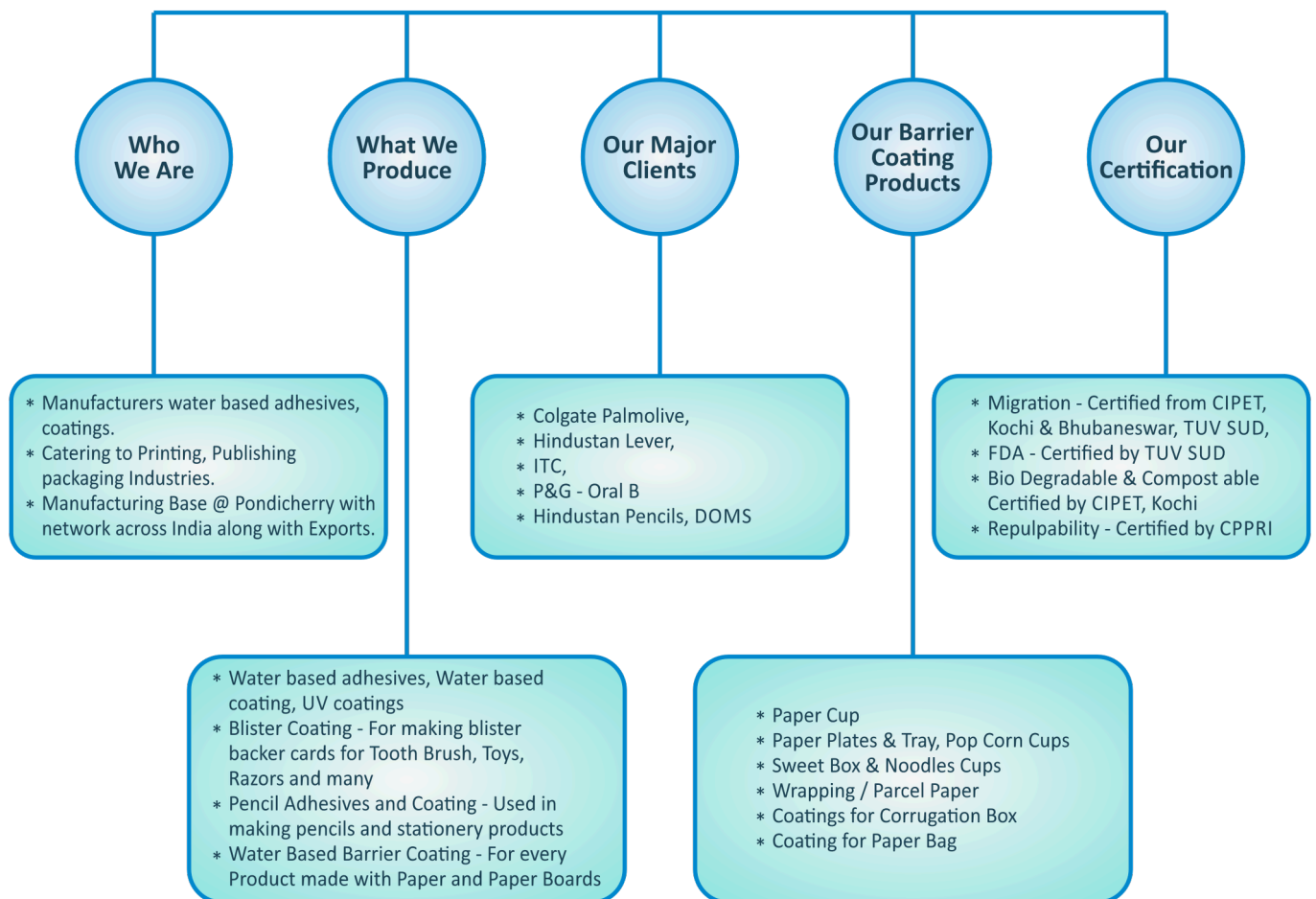
Established in the year 2000, Sumukha Hitech Products Industry is a trusted name in the manufacturing of premium-quality water-based adhesives and specialty coatings.

Headquartered in Puducherry, India, we are proud to serve a diverse range of industries including printing, packaging, and more.

With a steadfast commitment to innovation, quality, and sustainability, our product portfolio includes adhesives for lamination, side pasting, labeling, and pencils, as well as specialty coatings such as aqueous overprint varnishes, UV coatings, barrier coatings for paper cups, and blister packaging solutions.

Driven by a customer-centric approach, Sumukha ensures that every product is crafted to meet specific industrial requirements while adhering to global standards. Our certifications, including FDA, Migration, Biodegradable & Compostable, and Repulpability certifications, reflect our dedication to environmental responsibility and product excellence.

Expanding our footprint across India and internationally, we continue to deliver reliable, innovative, and eco-friendly solutions that empower our clients to achieve success in their respective industries. Welcome to Sumukha Hitech Products Industry – where quality meets innovation.



Adhesives

Wet Lamination Adhesive	PET, MET PET, BOPP, MET BOPP, PVC, Holographic film lamination with Printed Duplex/FBB boards
Dry Lamination Adhesive	For Automatic Lamination machines viz. Wen chuyan, Yii Lee, KDX, etc.
Side Pasting Adhesive	For Mono Carton side pasting. One side laminated or aqua coated. Not recommended for UV coated jobs.
Pressure Sensitive Adhesive	For making Stickers, Labels, Bindies, Gummed Sheets, Label Stock, Screen print
Binding Glue	For Board to Board pasting, Sheet lamination, Diary making, Case binding
Corrugation Adhesive	For Liner carton making, Duplex board to liner carton pasting, Flop Pasting adhesive for high-speed application
Wood Glue	Wood to wood & Ply, Wood to PVC and Edge Banding Glue
Label Adhesive	For Distilleries, Pharmaceutical Pet, Glass bottle label pasting
Paper/Mailer Bag Adhesive	Used for pasting Sides, Bottom Closing of Paper/Mailer Bags

Over Print Varnishes

Aqueous Coating	For High-Gloss, Matt, Satin
Specialty Aqua Coating	Playing Card, Board Primer
UV Curable Coating	For Full UV, Spot UV Duct UV, Texture UV, Screen application
Blister Coating - Water base	For PVC and PET blisters
Blister Coating - Solvent base	For PVC and PET blisters
Specialty Coatings	For clay coating, PVC profiles, Wood Coatings
Gutkha Series	Lamination Adhesive, Heat Seal Lacquer & UV Coating for Gutkha Pouch Making
Barrier Coating	For Paper cup/ Container/ Tub/ Parcel Paper with and without Heat seal/ Plate without heat seal
Synthetic Glue - No Animal Stuff included	Glue for Rigid Box, Case making. Its made out of Organic Chemical Compounds and ITS FREE FROM ANY ANIMAL STUFF

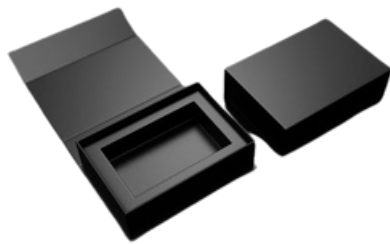


Animal glue Replacement

Sumukha has introduced an innovative and groundbreaking product—a water-based synthetic glue that sets a new standard in adhesive technology. This exceptional product offers a superior alternative to traditional animal jelly glue, combining cutting-edge innovation with practical benefits.

Key features of this revolutionary adhesive include:

- **Cruelty-Free Composition:** Completely free from animal-derived substances, making it a compassionate and sustainable choice for environmentally conscious consumers.
- **Hygienic and Clean:** Its advanced formulation ensures no bacterial or fungal growth over time, providing a safe and sanitary adhesive solution.
- **Unmatched Performance:** With outstanding tack and super-strong adhesion, it meets the highest expectations of industrial and domestic applications.
- **Enhanced Efficiency:** Offers excellent coverage and exceptional mileage, reducing consumption and improving cost-effectiveness.



AGR-02
AGR-37
Automatic

AGR-02, 37 are replacement for animal jelly and its a modified synthetic glue made with complete organic chemical compounds. No need for any external heating to reduce the viscosity. Suitable for automatic machines with quick drying properties with a better mileage than regular products. Can be used for Rigid Box as well Case making.

AGR-53 12
AGR-64 10
Manual

AGR-5312, 6410 are replacement for animaljelly and its a modified synthetic glue made with complete organic chemical compounds. No need for any external heating to reduce the viscosity. Suitable for manual operation machines with box strapping attachment. Can be used for Rigid box as well Case making.



BB35G

BB35G - is recommended for pasting kappa board with inner paper for the inside application. It's a synthetic white glue with quick setting time.

Inner paper can also be barrier coated with FDA approved emulsion to enable usage for sweet box and direct food contact products.



Blister Varnish

Sumukha's blister varnish is engineered to elevate your packaging standards. Designed for impeccable adhesion, durability, and clarity, our varnish ensures a flawless bond between the printed substrate and the plastic blister. With a focus on quality and innovation, Sumukha offers a diverse range of products in both water-based and solvent-based options, catering to various industry needs and preferences.

Whether for consumer goods or toys or pharmaceuticals, Sumukha's blister varnish delivers reliability and aesthetic excellence, making it the trusted choice for premium blister packaging solutions.



ABT 6341

Aqua Blister Coating for PET & PVC - Off line. Can be used as top coat with ABP140 as primer inline

ABT53SP,
ABT261,
ABT311

Aqueous PU blend – Specialty Blister Coating – For PET – Single Pass – Offline. This grade can either be given as two coats in offline or can be used as topcoat offline with ABP140 as primer inline

ABP140
(Primer)

Aqua Blister Primer Coating (Base Coat) - in line. Can eliminate Powder and will help in ink drying as well with heat seal properties

BS 3520

Solvent Blister Coating PVC - Off line

SBT 6045E

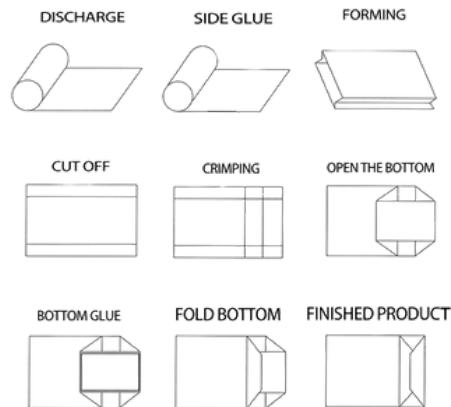
Solvent Blister Coating PET & PVC - Off line

SBT 5490/
SBT 9076

Solvent Blister Coating PET - Off line suitable for FBB



Paper Bag Adhesive



Side Closing

PB-546 Recommended for Side pasting of paper bags with quick initial bond and permanent adhesion.

Bottom Closing

PB-SGA One of the important areas for paper bag making is its bottom lock which holds the total weight along with handle. Suggested grade is PB-SGA with recommended coat weight of 8-10 dry gsm, it could provide excellent bond strength along with quick settling time.

Bottom as well Hand Closing

PB-SP2K Much better and stronger adhesive which can be used in any area of paper bag and the best part of this grade is its versatility to paste and bind any area of paper bag.

Side & Bottom Closing

Mailer Bag(MB)-CG is for cold glue application with an excellent bond strength. Recommended gsm is around 20.

Side & Bottom Closing

MB-HSG is for heat seal glue for side closing. Recommended gsm is around 20-25 (double pass) and sealing temperature of 200-250 degc.

Side & Bottom Closing

MB-HSL is heat seal lacquer for side closing with a recommended wet gsm of 10-14. Sealing temperature is around 200-250 degc

Barrier Coating

PB/MB-BRC is to create barrier on paper and gives an excellent OGR and water repellent properties. Can be coated through rotogravure or any designated coating machine



Barrier Coating

**Water
Base
Acrylic
Emulsion**

**BIO-DEGRADABLE*
COMPOST-ABLE*
ECO-FRIENDLY
REPULPABLE
MIGRATION FREE
FDA APPROVED**

**ELIMINATE SINGLE
USE PLASTICS FOR A
SUSTAINABLE FUTURE**



Paper Cup

- Heat Sealable
- Water Repellent
- Single or Double Pass



TAKE AWAY CONTAINER / PARCEL TRAY / PARCEL TUB

- Heat Sealable
- OGR - Kit of 8-12
- Glue-able
- Water Repellent
- Single or Double Pass



PAPER PLATE MAKING, WRAPPING, PARCEL PAPER

- Non - Heat Sealable
- OGR - Kit of 8-12
- Glue-able
- Water Repellent
- Single or Double Pass



PAPER POUCHES

- Heat Sealable
- OGR - Kit of 8-12
- Glue-able
- Water Repellent
- Single or Double Pass



PAPER BAG

- Water Repellent
- Glue-able
- No Water seepage
- Single or Double Pass
- Both sides coated



Biodegradable



Compostable



Recyclable

★ As per CIPET certification IS 17088



Wet Lamination Adhesive

LA3440	For BOPP, Met Pet, PVC film lamination
LA3445	For BOPP, Met Pet, Clear pet
LA35H	High viscous lamination Adhesive for High Bond Jobs viz, Corrugation Boxes, High Tint, Powder coated jobs (5000-6000 cps)
LA37	Low Viscous lamination adhesive for High Bond Jobs viz, corrugation boxes, High Tint, Powder coated jobs
LA3437	For Met Pet Film lamination with 2500-3000 viscosity with excellent mileage.
LA990	Acrylate based product with fine particle size. Extra mileage with extra bond strength
LA685	For laminating Gold/Silver Ink Printed Jobs to prevent Blackening of the prints.

Dry Lamination Adhesive

DL5460	For BOPP Clear and matt films. High Bond, High Gloss. Export Grade
DL52	For Clear Polyester and Other Films - High Bond, Good Gloss
DL62	For Clear Polyester and Other Films - Economy version of DL52
DLS500	For Clear BOPP, Met Pet - Excellent coverage with Mileage
DL764	Versatile product for different lamination applications

Non-Filmic Adhesive

NFA546	<ul style="list-style-type: none">• For laminating liner cartons with duplex printed boards for carton making.• Excellent Bond strength with 8-10% moisture on delivery.• Suitable for High speed machines.
BL5540	<ul style="list-style-type: none">• Pasting Board-to-Board,• Paper-to-Paper for making Stationery products and Envelop making

Wood Adhesive

WA40K	Carpentry, upholstery applications
WA45K	Economy grade for carpentry, upholstery applications.



Side pasting Adhesive

SPW50	For high-speed board to board side pasting of cartons with one side film lamination or WBC coated. Suitable for wheel,roller coat application. Not recommended for UV coated boards.
SP2K/SP261	For high Speed Flop/side pasting corrugated and paper board boxes with one side film lamination or WBC coating. Designed for nozzle application. Can be used in Wheel application if viscosity is found suitable. Not recommended for UV.
SP292	For Manual application - Designed for pasting sides of laminated carton boxes with cut opening and or one side laminated-or WBC coated (not for UV) –High Viscosity

Corrugation Adhesive

SL725	Pasting laminated sheets with liner cartons, board to board pasting.
FP810	Flop pasting of corrugated boxes (designed for high speed machines with low viscosity)
GR1	Product designed for Case binding application – both manual as well machine – for Diary, Calendar, Bakery box making.
ML32	Higher version of GR1 and designed for the same applications

Pencil Adhesive

PAD-53A	Adhesive Used for making Pencils – for Automatic Machine
PAD-735M	Adhesive Used for making Pencils – for Manual Machine

Speciality Adhesive

AG 224	Label pasting - Glass bottles – High viscous – Distilleries
WPA	Window Pasting Adhesive
SGA	Spine Glue for cloth pasting in stationery, textile and other products
MR35	Adhesive for Art and Craft. Works with multiple substrates like paper, cardboard, wood, polystyrene etc.



Over Print Varnish - Aqueous

A2050	Gloss with high rub properties
AXR1	Gloss with Extra high rub properties
AM6219	Full Matt coating
AUVP (Primer)	Water base Primer – For UV Top coat

Over Print Varnish - UV

UV1515	Offline & Inline - Good Gloss, Good Slip and MEK resistant. Also available in this series are UV1717, UV3540, UV4222N
UV3835	Offline & Inline - High Gloss ,High Slip , Good Mileage with MEK resistant.
UVRCM	UV Matt for offline roller coater
UVF1	UV Flexo Gloss Varnish
UV1500C	UV Drip off gloss – end of the press coating – High coarse
UV1500M / UV3015	UV Drip off gloss – end of the press coating – Medium coarse
UDDM	UV Drip off Duct Matt - High coarse

Gutkha Series

APL 9045	Lamination adhesive for paper to foil lamination
GU 3830	UV top-coat gloss varnish

Speciality Over Print Coatings

APL 9045	Over Print Coatings – Aqueous Base – for playing card with High slip and gloss
UPL 1515	Over Print Coatings – UV varnish – for playing card with High slip and High gloss
PB24	Heat Seal lacquer for aluminium foil heat seal-able coating
PB25	Heat Seal lacquer for aluminium foil heat seal-able coating



[illegible][illegible]

100, 1001, 101, 102, 103, 104, 105, 106, 107, 108, 109, 110, 111, 112, 113, 114, 115, 116, 117, 118, 119, 120, 121, 122, 123, 124, 125, 126, 127, 128, 129, 130, 131, 132, 133, 134, 135, 136, 137, 138, 139, 140, 141, 142, 143, 144, 145, 146, 147, 148, 149, 150, 151, 152, 153, 154, 155, 156, 157, 158, 159, 160, 161, 162, 163, 164, 165, 166, 167, 168, 169, 170, 171, 172, 173, 174, 175, 176, 177, 178, 179, 180, 181, 182, 183, 184, 185, 186, 187, 188, 189, 190, 191, 192, 193, 194, 195, 196, 197, 198, 199, 200, 201, 202, 203, 204, 205, 206, 207, 208, 209, 210, 211, 212, 213, 214, 215, 216, 217, 218, 219, 220, 221, 222, 223, 224, 225, 226, 227, 228, 229, 230, 231, 232, 233, 234, 235, 236, 237, 238, 239, 240, 241, 242, 243, 244, 245, 246, 247, 248, 249, 250, 251, 252, 253, 254, 255, 256, 257, 258, 259, 260, 261, 262, 263, 264, 265, 266, 267, 268, 269, 270, 271, 272, 273, 274, 275, 276, 277, 278, 279, 280, 281, 282, 283, 284, 285, 286, 287, 288, 289, 290, 291, 292, 293, 294, 295, 296, 297, 298, 299, 300, 301, 302, 303, 304, 305, 306, 307, 308, 309, 310, 311, 312, 313, 314, 315, 316, 317, 318, 319, 320, 321, 322, 323, 324, 325, 326, 327, 328, 329, 330, 331, 332, 333, 334, 335, 336, 337, 338, 339, 340, 341, 342, 343, 344, 345, 346, 347, 348, 349, 350, 351, 352, 353, 354, 355, 356, 357, 358, 359, 360, 361, 362, 363, 364, 365, 366, 367, 368, 369, 370, 371, 372, 373, 374, 375, 376, 377, 378, 379, 380, 381, 382, 383, 384, 385, 386, 387, 388, 389, 390, 391, 392, 393, 394, 395, 396, 397, 398, 399, 400, 401, 402, 403, 404, 405, 406, 407, 408, 409, 410, 411, 412, 413, 414, 415, 416, 417, 418, 419, 420, 421, 422, 423, 424, 425, 426, 427, 428, 429, 430, 431, 432, 433, 434, 435, 436, 437, 438, 439, 440, 441, 442, 443, 444, 445, 446, 447, 448, 449, 450, 451, 452, 453, 454, 455, 456, 457, 458, 459, 460, 461, 462, 463, 464, 465, 466, 467, 468, 469, 470, 471, 472, 473, 474, 475, 476, 477, 478, 479, 480, 481, 482, 483, 484, 485, 486, 487, 488, 489, 490, 491, 492, 493, 494, 495, 496, 497, 498, 499, 500, 501, 502, 503, 504, 505, 506, 507, 508, 509, 510, 511, 512, 513, 514, 515, 516, 517, 518, 519, 520, 521, 522, 523, 524, 525, 526, 527, 528, 529, 530, 531, 532, 533, 534, 535, 536, 537, 538, 539, 540, 541, 542, 543, 544, 545, 546, 547, 548, 549, 550, 551, 552, 553, 554, 555, 556, 557, 558, 559, 560, 561, 562, 563, 564, 565, 566, 567, 568, 569, 570, 571, 572, 573, 574, 575, 576, 577, 578, 579, 580, 581, 582, 583, 584, 585, 586, 587, 588, 589, 590, 591, 592, 593, 594, 595, 596, 597, 598, 599, 600, 601, 602, 603, 604, 605, 606, 607, 608, 609, 610, 611, 612, 613, 614, 615, 616, 617, 618, 619, 620, 621, 622, 623, 624, 625, 626, 627, 628, 629, 630, 631, 632, 633, 634, 635, 636, 637, 638, 639, 640, 641, 642, 643, 644, 645, 646, 647, 648, 649, 650, 651, 652, 653, 654, 655, 656, 657, 658, 659, 660, 661, 662, 663, 664, 665, 666, 667, 668, 669, 670, 671, 672, 673, 674, 675, 676, 677, 678, 679, 680, 681, 682, 683, 684, 685, 686, 687, 688, 689, 690, 691, 692, 693, 694, 695, 696, 697, 698, 699, 700, 701, 702, 703, 704, 705, 706, 707, 708, 709, 710, 711, 712, 713, 714, 715, 716, 717, 718, 719, 720, 721, 722, 723, 724, 725, 726, 727, 728, 729, 730, 731, 732, 733, 734, 735, 736, 737, 738, 739, 740, 741, 742, 743, 744, 745, 746, 747, 748, 749, 750, 751, 752, 753, 754, 755, 756, 757, 758, 759, 760, 761, 762, 763, 764, 765, 766, 767, 768, 769, 770, 771, 772, 773, 774, 775, 776, 777, 778, 779, 780, 781, 782, 783, 784, 785, 786, 787, 788, 789, 790, 791, 792, 793, 794, 795, 796, 797, 798, 799, 800, 801, 802, 803, 804, 805, 806, 807, 808, 809, 810, 811, 812, 813, 814, 815, 816, 817, 818, 819, 820, 821, 822, 823, 824, 825, 826, 827, 828, 829, 830, 831, 832, 833, 834, 835, 836, 837, 838, 839, 840, 841, 842, 843, 844, 845, 846, 847, 848, 849, 850, 851, 852, 853, 854, 855, 856, 857, 858, 859, 860, 861, 862, 863, 864, 865, 866, 867, 868, 869, 870, 871, 872, 873, 874, 875, 876, 877, 878, 879, 880, 881, 882, 883, 884, 885, 886, 887, 888, 889, 890, 891, 892, 893, 894, 895, 896, 897, 898, 899, 900, 901, 902, 903, 904, 905, 906, 907, 908, 909, 910, 911, 912, 913, 914, 915, 916,

[illegible][illegible][illegible][illegible]



SUMUKHA HITECH PRODUCTS INDUSTRY

Coatings & Adhesives Manufacturer

Driven to Deliver Value, Not Just Products

B20-22 & B34-36, INDUSTRIAL ESTATE, SEDARAPET, PONDICHERRY - 605 111, INDIA.
admin@sumukhahitech.com sumukhahitech@gmail.com +91 94433 36064
www.sumukhahitech.com & www.adhesivesncoatings.com +91 95516 89192